



CYBONET



PineApp Mail Secure for VMware

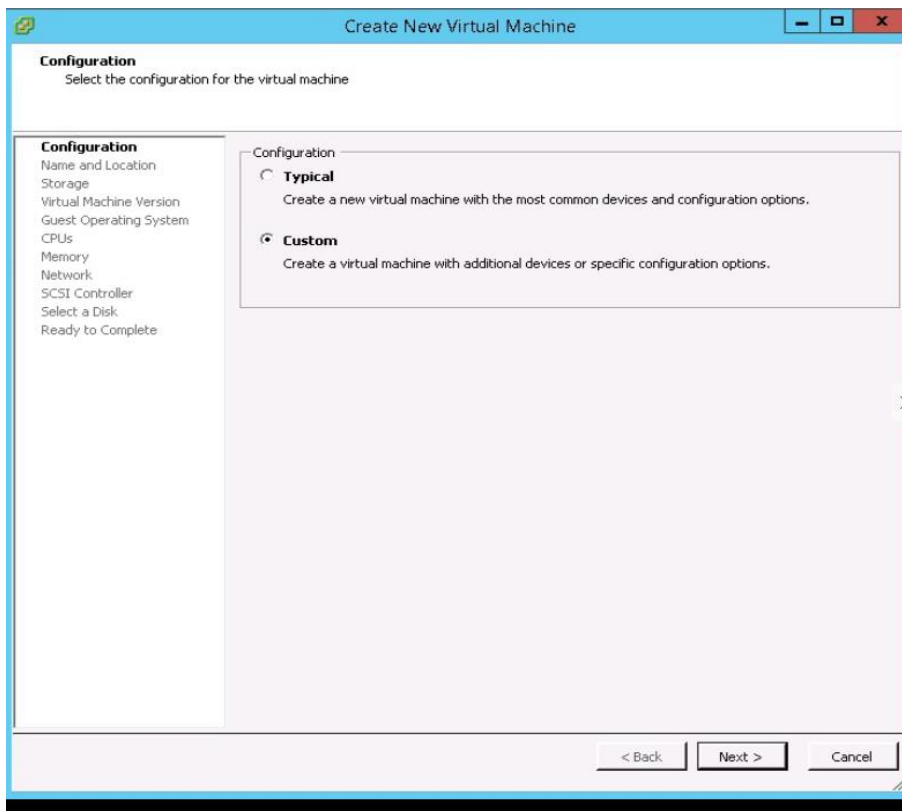
Quick Installation Guide

CYBONET PineApp Mail Secure is fully available for installation on a Virtual Machine (VMWare) platform.

The following manual provides assistance in installing CYBONET PineApp Mail Secure on a Virtual Machine on VMWare servers and ESXi platforms.

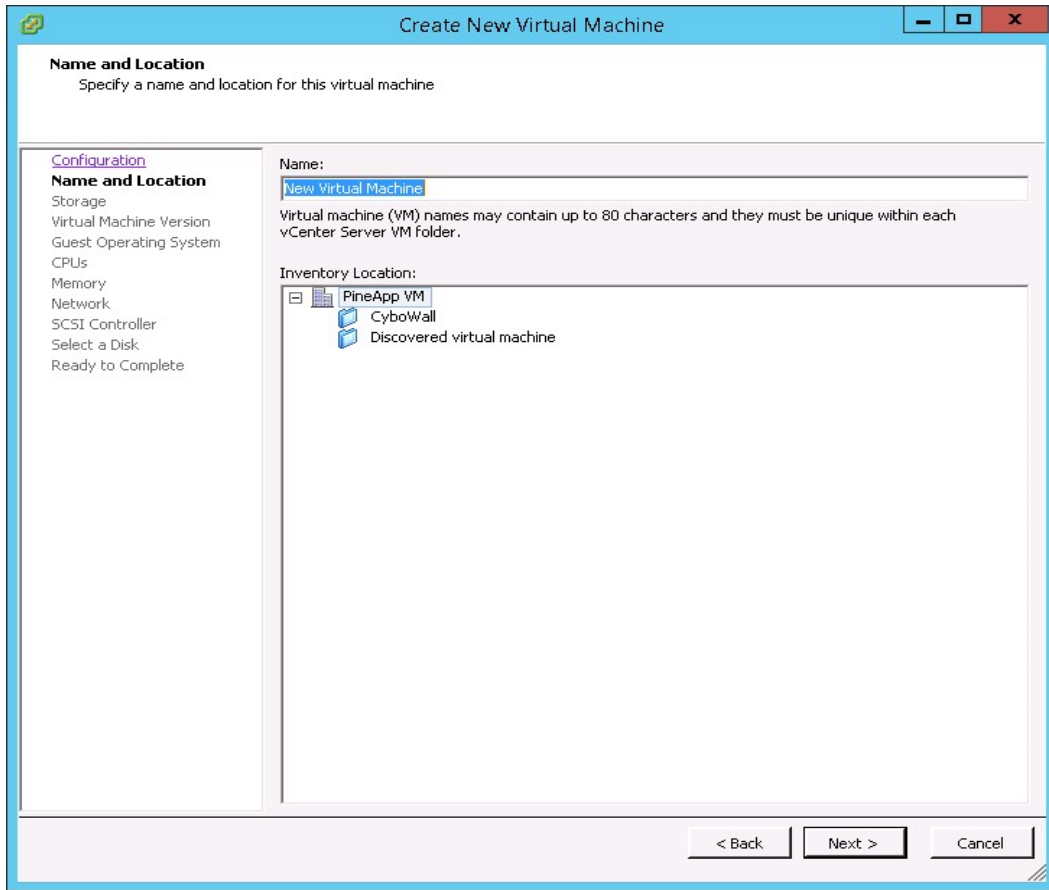
Step 1: Installing PineApp Mail Secure over virtual machine.

1. Login into your VMWare platform
2. Click on **Virtual Machine** > **Create new virtual machine**
3. Under **Configuration** menu, please choose > **Custom**.



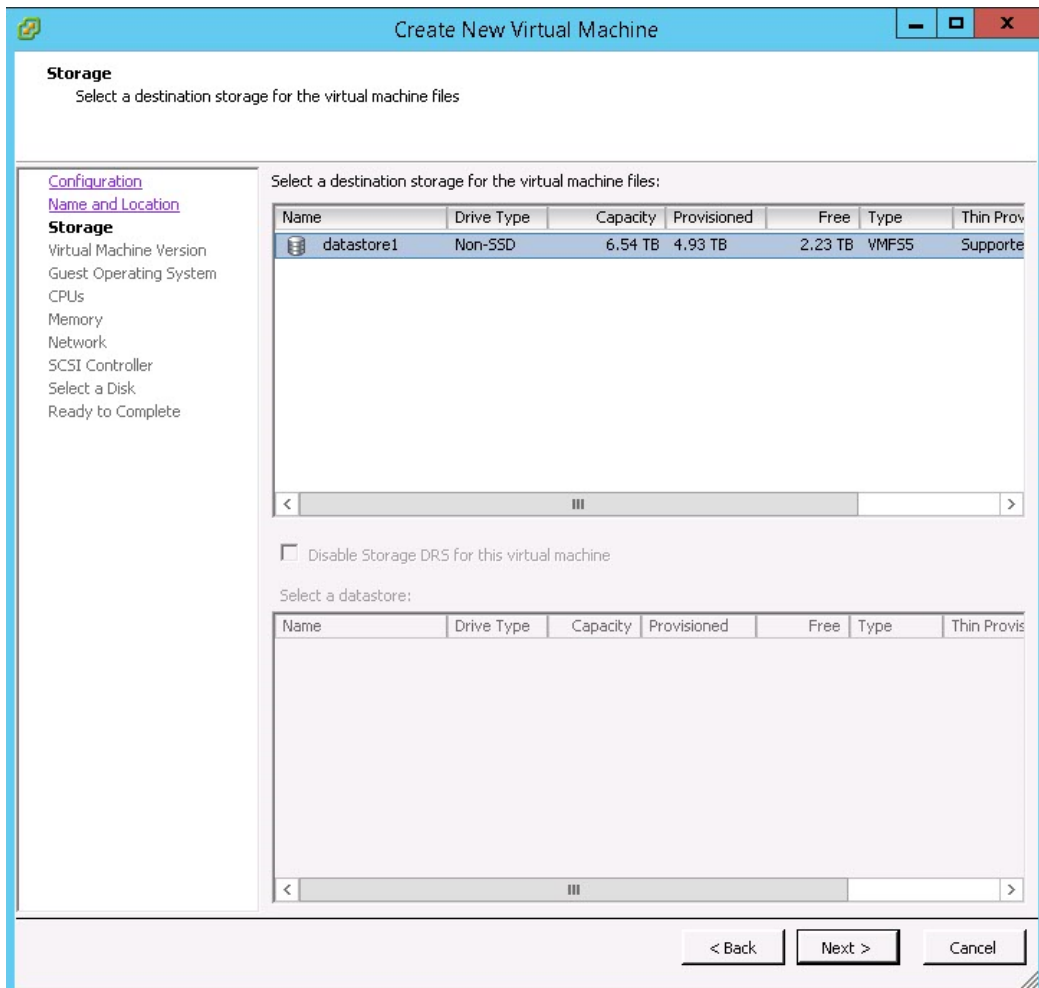


- 4. Under the **Name a Location** menu, type the new Virtual Machine’s name (preferably the product’s name, for example – PineApp)

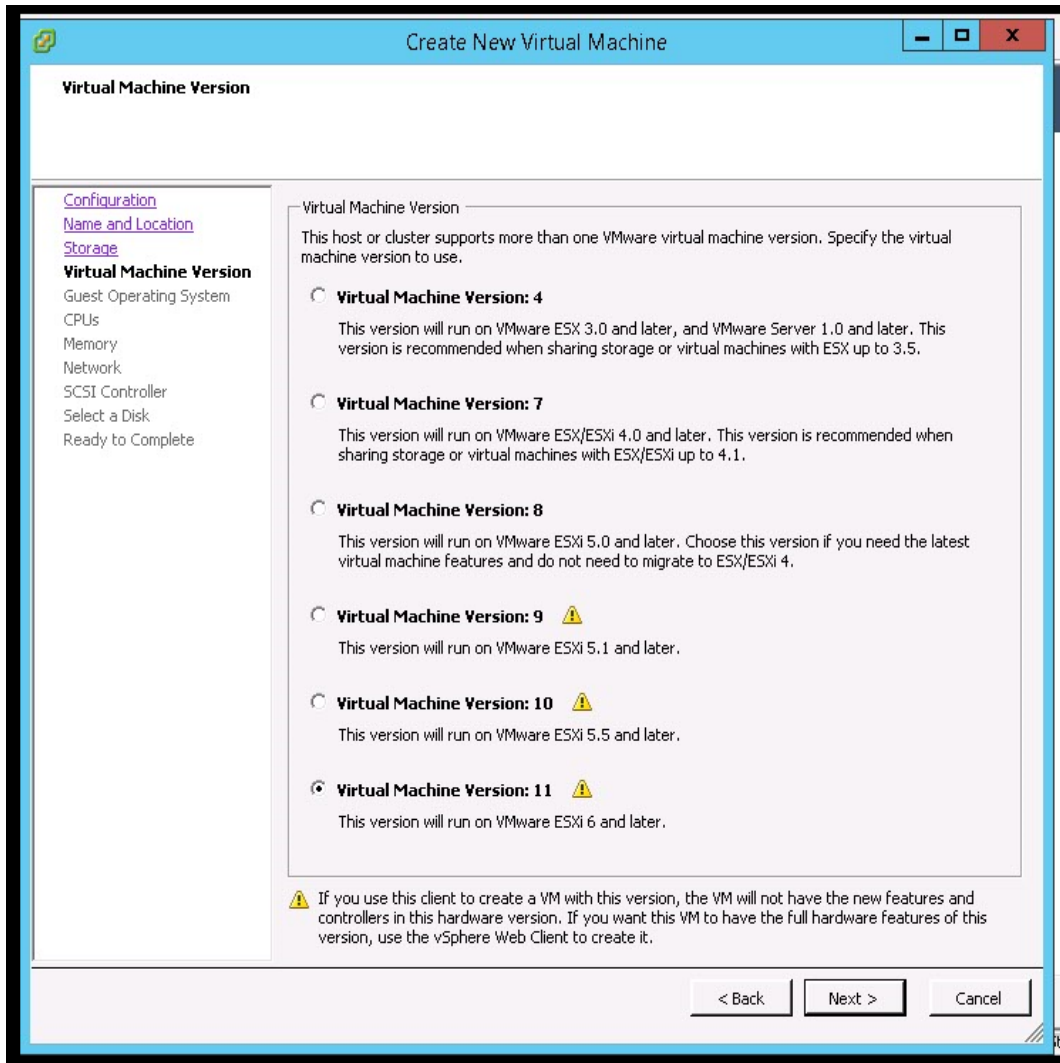




5. Under the Storage menu, please select relevant storage name and click on **Next >**

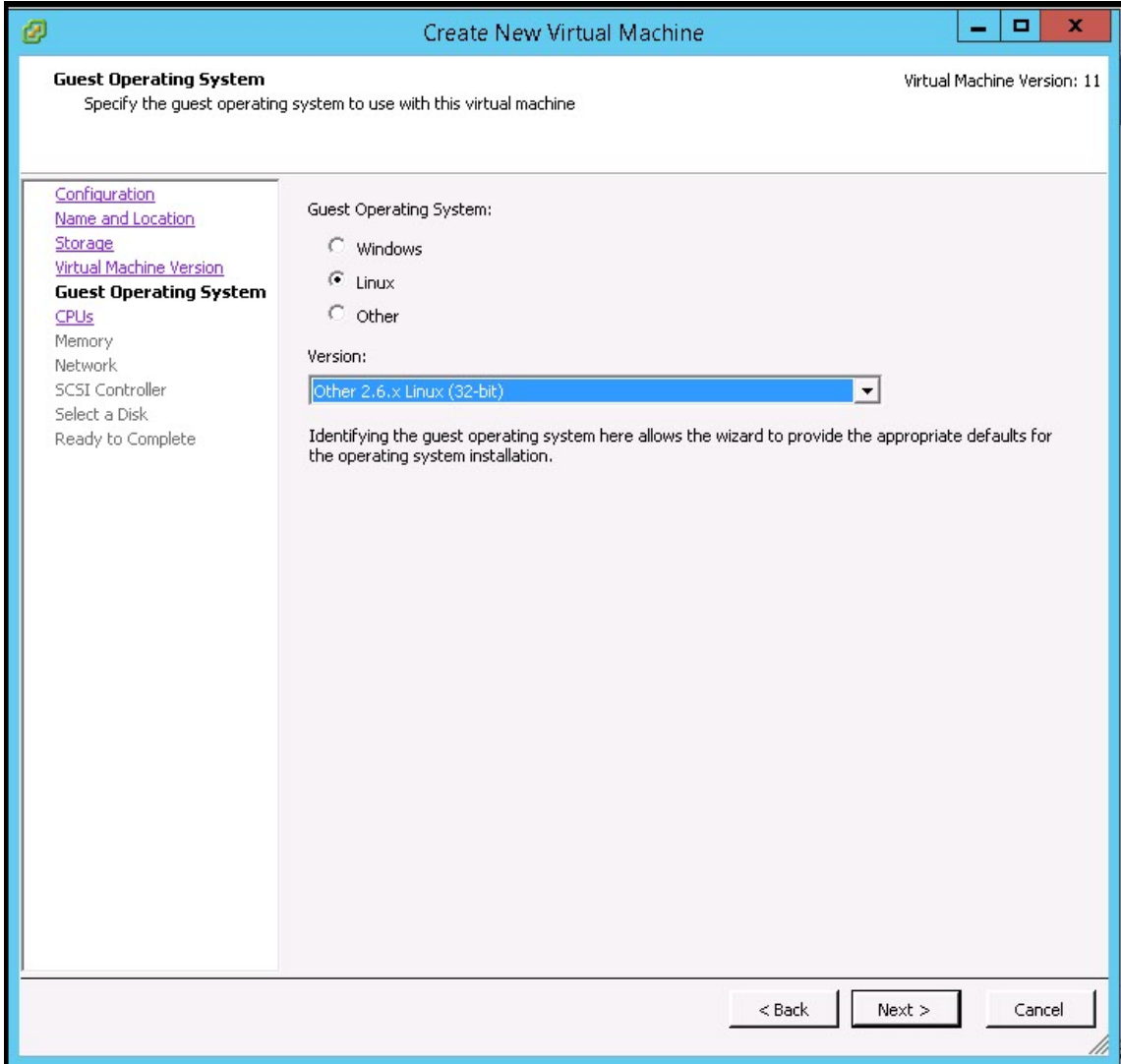


6. On the **Virtual Machine Version**, choose **Virtual Machine Version 11**.

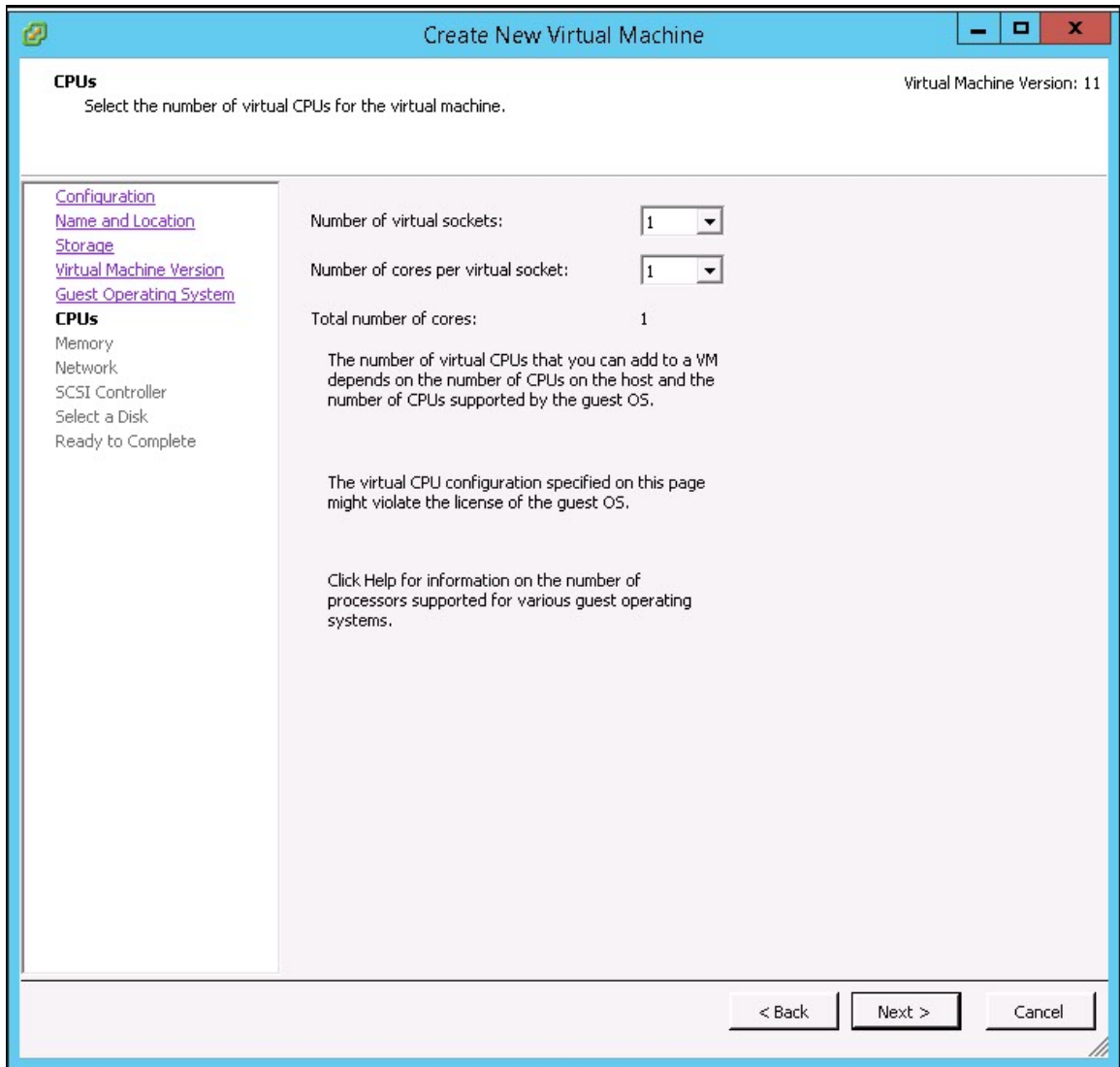




- 7. Under the **Guest Operating System**
 - a. Choose **Linux**
 - b. Select **Other 2,6,x Linux (32-bit)**



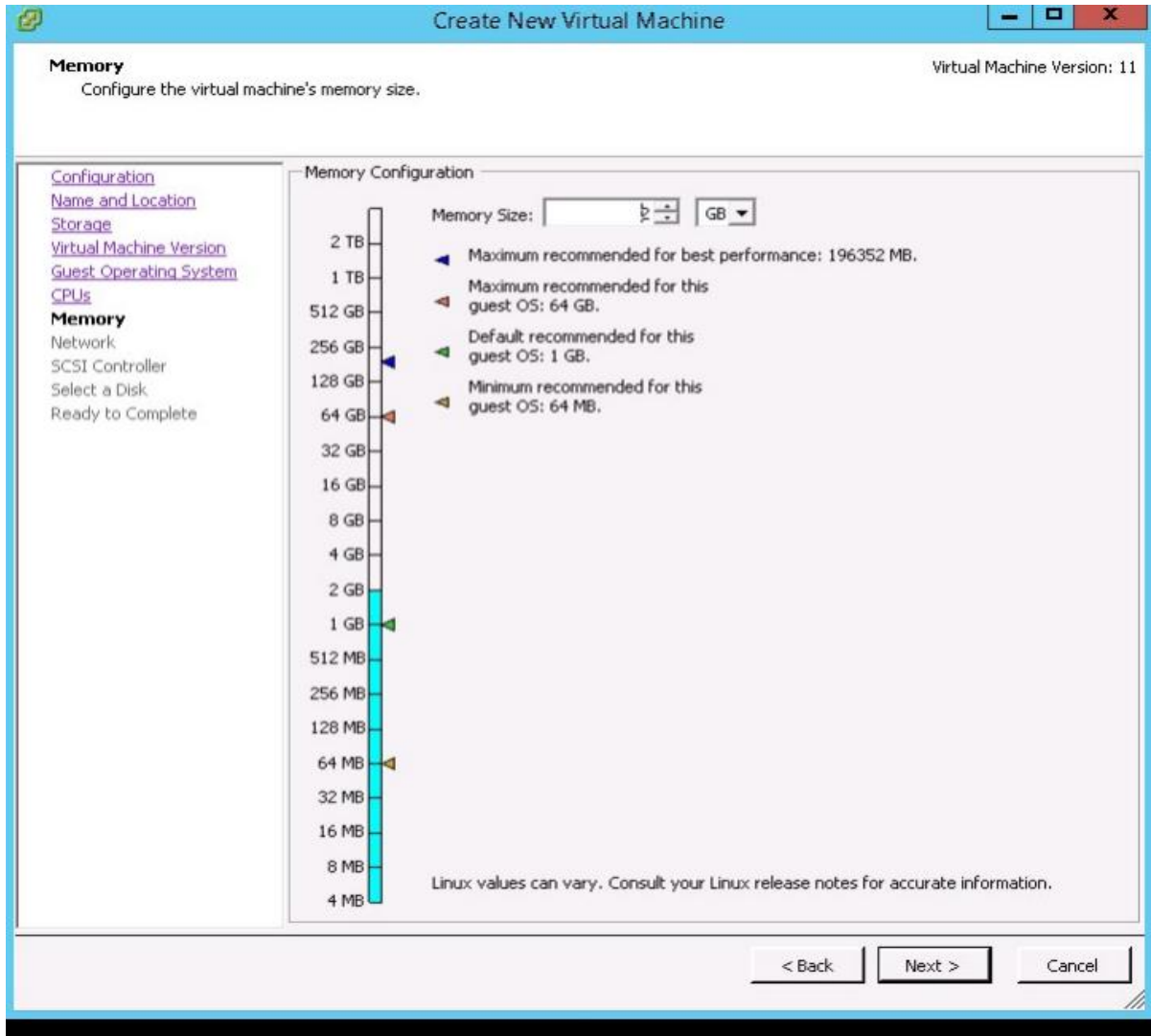
- Under the **CPUs** menu, please choose the required number of CPU cores, the minimum recommended value is – **2 cores**.



The screenshot shows the 'Create New Virtual Machine' wizard with the 'CPUs' step selected. The window title is 'Create New Virtual Machine' and it shows 'Virtual Machine Version: 11'. The instruction is 'Select the number of virtual CPUs for the virtual machine.' On the left, a navigation pane lists: [Configuration](#), [Name and Location](#), [Storage](#), [Virtual Machine Version](#), [Guest Operating System](#), **CPUs**, Memory, Network, SCSI Controller, Select a Disk, and Ready to Complete. The main area shows 'Number of virtual sockets: 1', 'Number of cores per virtual socket: 1', and 'Total number of cores: 1'. Below this, there is a warning: 'The number of virtual CPUs that you can add to a VM depends on the number of CPUs on the host and the number of CPUs supported by the guest OS.' and another note: 'The virtual CPU configuration specified on this page might violate the license of the guest OS.' At the bottom, there are buttons for '< Back', 'Next >', and 'Cancel'.

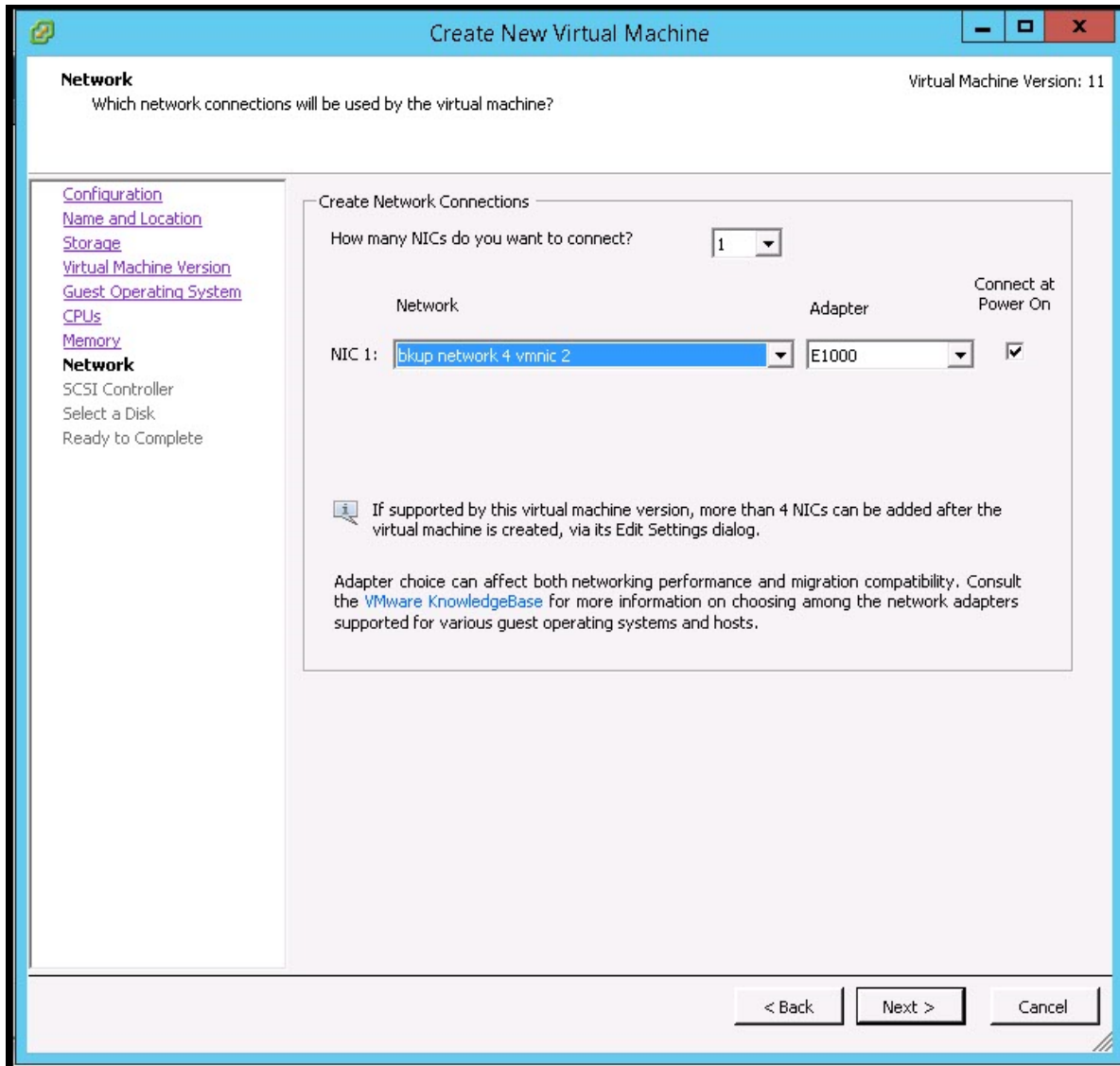


- 9. Under **Memory**, please select RAM size the minimum recommended value is – **4GB RAM (4096MB)**



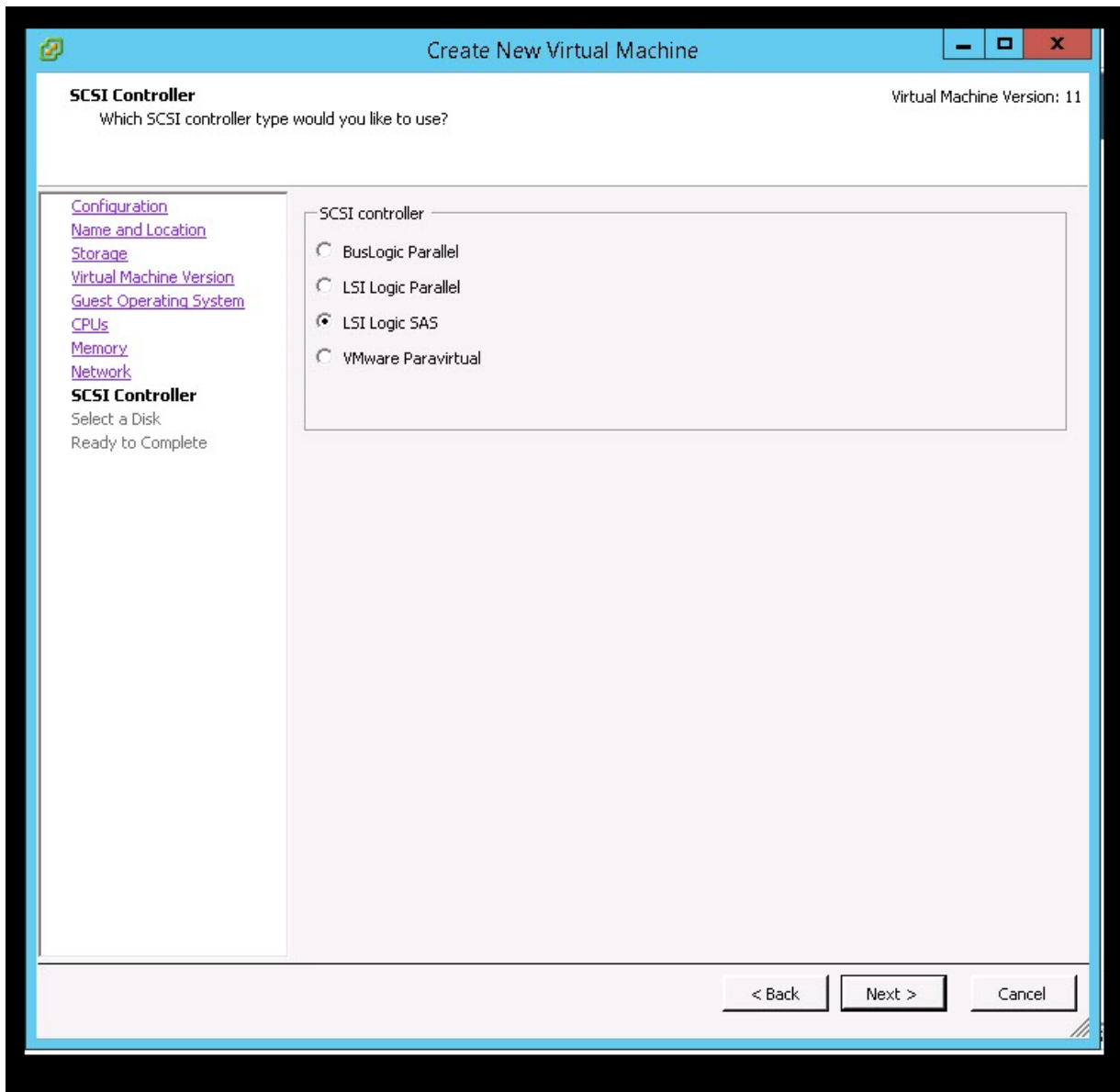


- Under the **Network** menu, select number of NICs.
Adapter type must be – **E1000**.



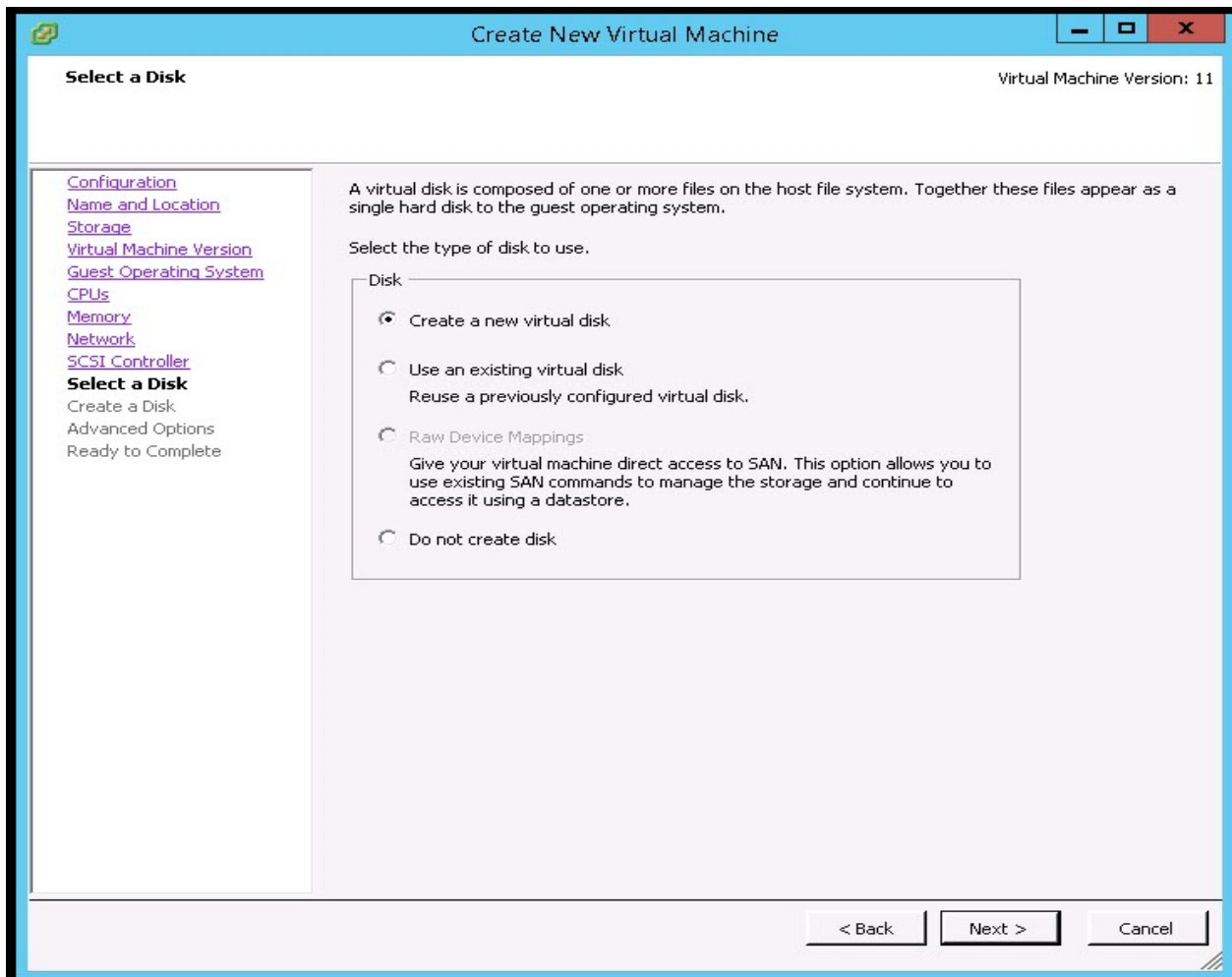


11. Under **SCSI Controller**, please select **LSI Logic SAS**.





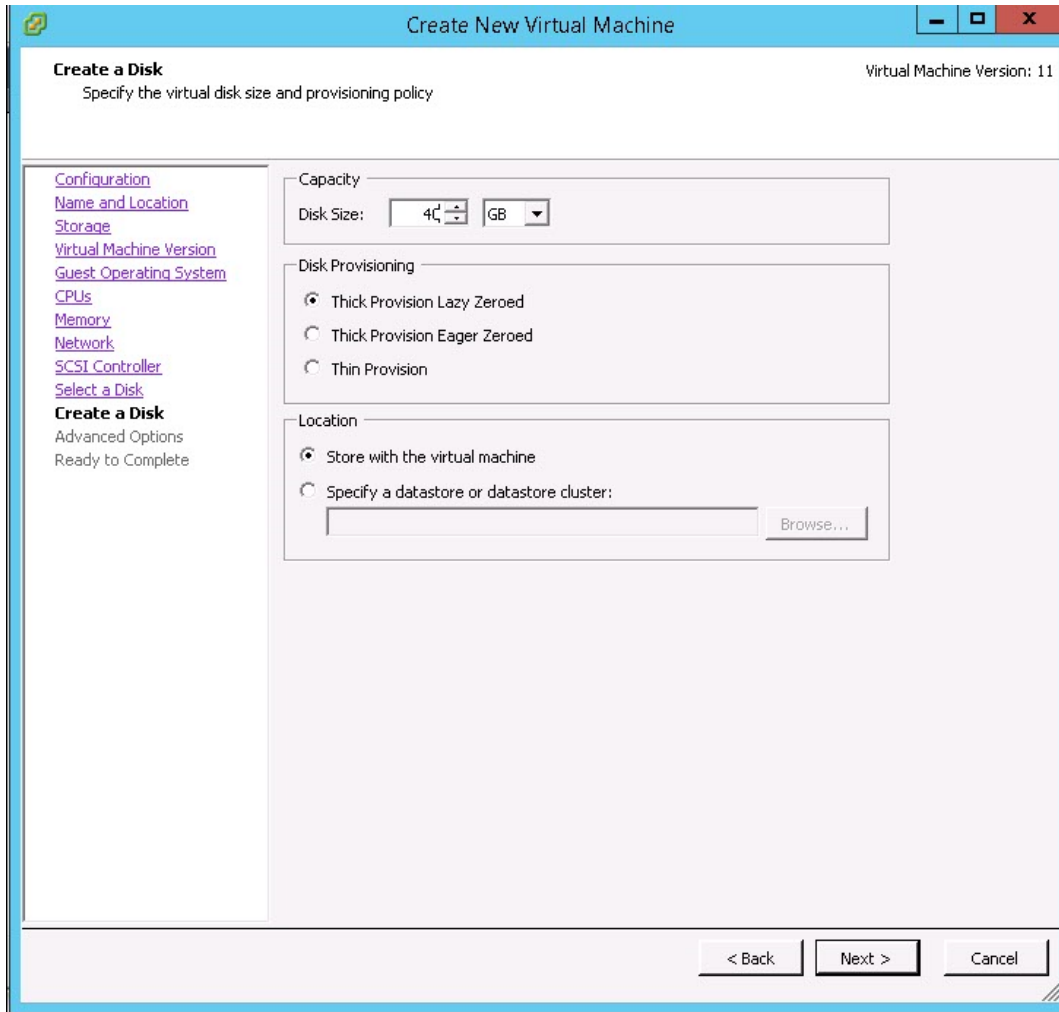
12. On the next menu, please choose to **Create a new virtual disk**.





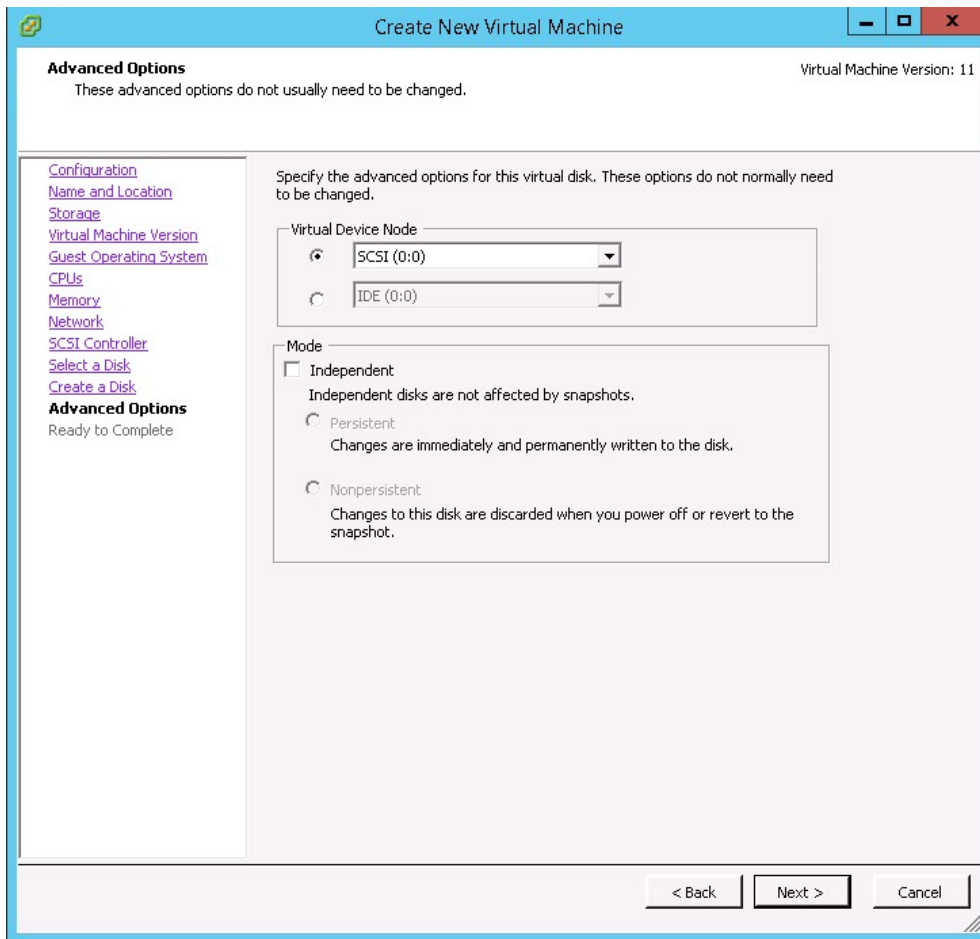
13. The recommended disk size for a standalone unit is **300GB**, for a scanner unit in cluster **120GB** is enough.

The rest of the options must be chosen as can be seen on this screenshot below.



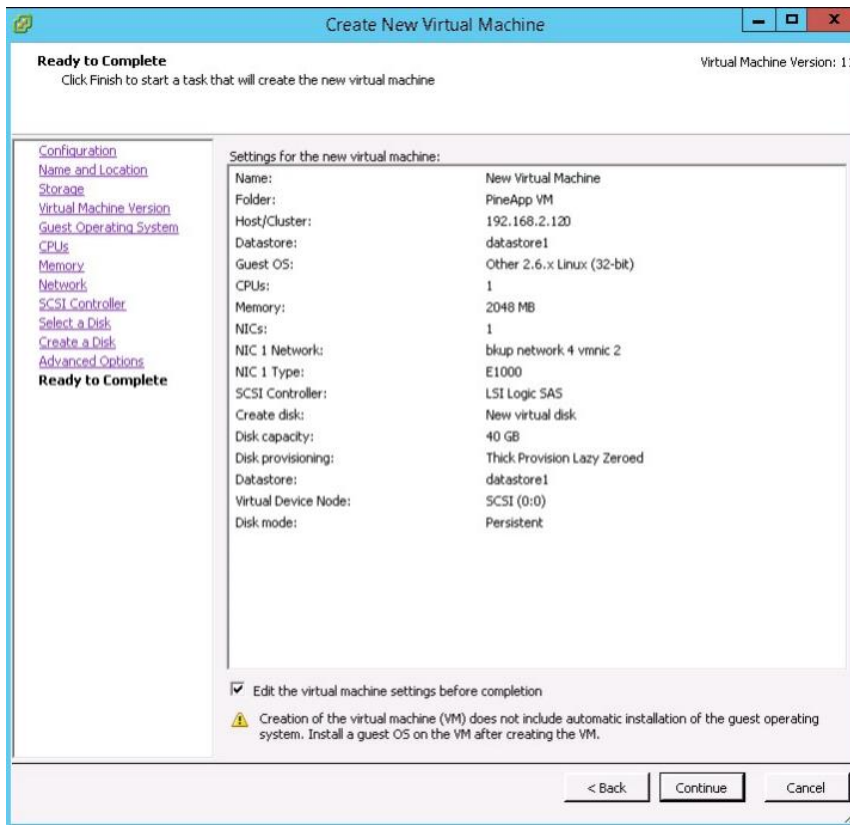


14. Under **Advanced Options**, please use the settings recommended below.

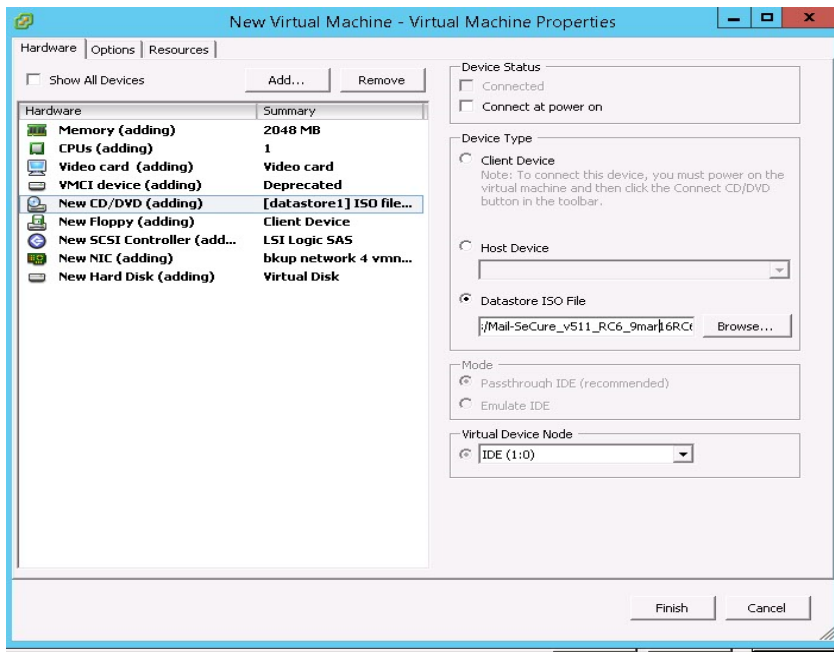




15. Under the **Ready to Complete** menu, please verify that the virtual machine settings are to your expectations and click on the **Continue** button.



16. Under the **Hardware** tab, please select PineApp Mail Secure ISO file under **Datastore ISO File** and then click on **Finish**



Step 2: Activating PineApp Mail Secure product on a Virtual Machine.

In order to complete installation and activate your newly installed virtual machine.

- Go to **Virtual Machines** tab
- Check the newly added system
- Power ON** new instance.



ABOUT CYBONET

CYBONET, formerly PineApp, was originally established as an Email Security Solutions Company. Since 2002 CYBONET 's internet security and network control products enable SMB/E's and Telcos to comprehensively protect their critical network infrastructure. Whether through the flagship PineApp Mail Secure solution or the next generation of Cyber Protection solutions - CYBONET is dedicated to security. With a renewed dedication to our valued Partner community as well as the development of a platform for Managed Service Providers to more efficiently deliver our solutions - CYBONET is committed to bringing our technologies to all corners of the globe.

CYBONET Support

CYBONET Support Center

e: support@cybonet.com

p: +972.4.8212321